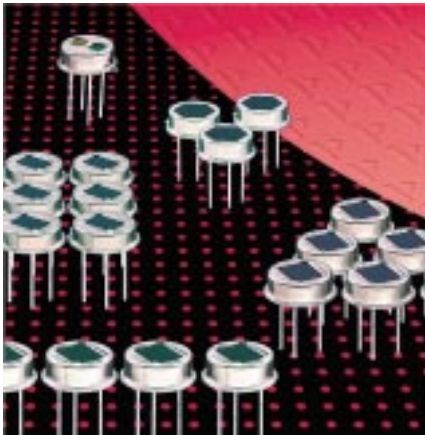


Motion Detection Applications

Pyroelectric Detector LHi 906

Dual Element including FET and optical window

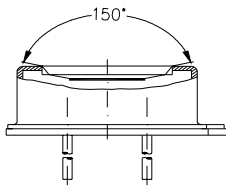


Banana (Yin Yang) element design

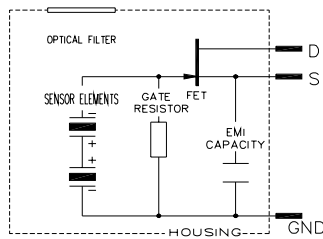
Designed for ceiling mount applications

The **LHi 906** pyroelectric infrared-detector is a special design for motion control in ceiling mount applications. It includes a pyroelectric ceramic with 2 sensitive elements in round shape connected to one FET in source follower connection.

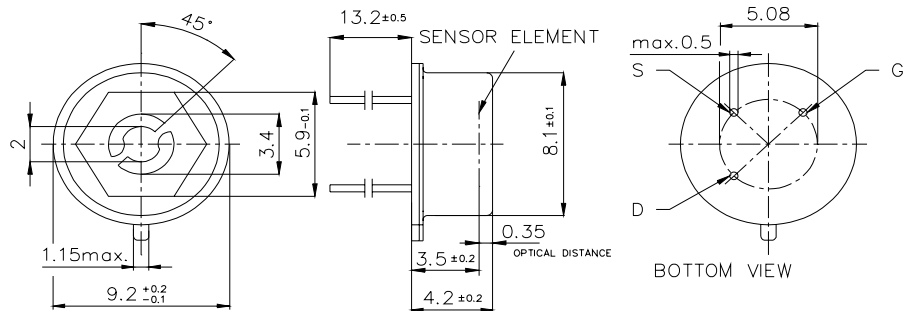
This detector is available in TO-5 housing with a standard infrared filter. It offers low noise, special field of view and capture for ceiling mount applications.



Field of View



Parameters	LHi 906			units	condition
	min	typical	max		
Element size		2,66		mm ²	(2 round elemts.)
Responsivity	2500	3000		V/W	100°C, 1 Hz
Match		1	10	%	
Noise		20	50	µVpp	25°C, 0,3...10Hz
Offset Voltage	0,2		1,5	V	R _s =47kΩ, 25°C
D*	6x10 ⁻⁷	19x10 ⁻⁷		cm √Hz/W	1Hz Bw, 100°C, 1 Hz
Output Impedance		5	10	kΩ	R _s =47kΩ, 25°C
Operating Voltage	2		15	V	R _s =47kΩ, 25°C
Field of View, horizontal		150°			unobstructed
Field of View, vertical		150°			unobstructed
Operating Temperature	-40		85	°C	non permanent
Storage Temperature	-40		85	°C	non permanent



Europe:
PerkinElmer Optoelectronics
 GmbH & Co KG
 Wenzel Jaksch Str 31
 65199 Wiesbaden / Germany
 Phone +49(0)611 492 0
 Fax +49(0)611 492 170

USA:
PerkinElmer Optoelectronics
 44370 Christy Street
 Fremont, CA 94538-3180
 Phone +510 979 6500
 +800 775 6786
 Fax +510 687 1140

Asia: Dimensions in mm
PerkinElmer Optoelectronics
 47, Ayer Rajah Crescent #06-12
 Singapore 139947
 Phone +65 775 2022
 Fax +65 775 1008



Right for modification reserved / WS / 28.8.2003