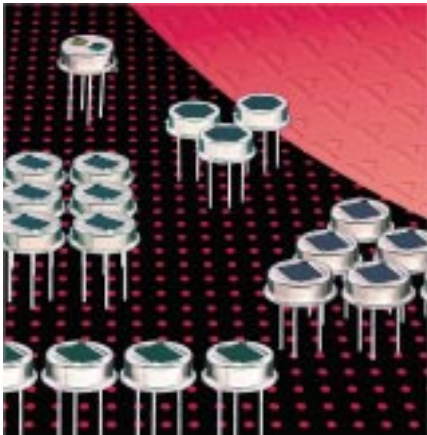


Pyroelectric Detector LHi 954/958

Dual Element configuration including FET and optical window

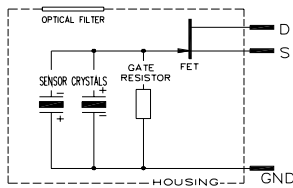
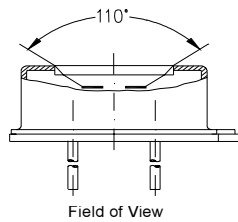


Dual Element Detector

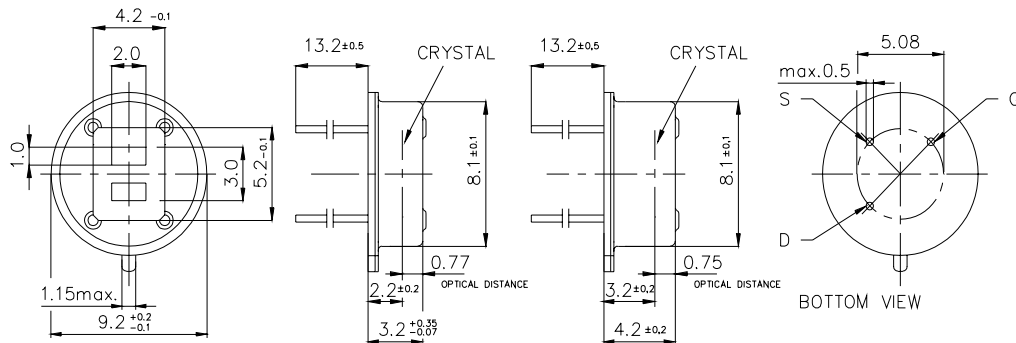
Designed in with many Applications

The **LHi 954** and **LHi 958** pyroelectric infrared-detectors have been industry standard for more than 10 years. They both are dual element types with FET in source follower connection.

The **LHi 954** detector is available in **TO-39** housing with standard infrared filter whereas the **LHi 958** is the same detector in a **TO-5** housing with standard infrared filter.



Parameters	LHi 954 / 958			
	min	typical	max	units condition
Element size	2x1		mm ²	(2 elements)
Responsivity	3000	3700	V/W	100°C, 1 Hz
Match	1	10	%	
Noise	20	50	µVpp	25°C, 0,3..10Hz
Offset Voltage	0,2	1,50	V	R _s =47kΩ, 25°C
D*	5,6x10 ⁷	17,5x10 ⁷	cm √Hz/W	1Hz Bw, 100°C, 1 Hz
Output Impedance	5	10	kΩ	R _s =47kΩ, 25°C.
Operating Voltage	2	12	V	R _s =47kΩ, 25°C
Field of View, horizontal	110°		unobstructed	
vertical	110°		unobstructed	
Operating Temperature	-40	85	°C	non permanent
Storage Temperature	-40	85	°C	non permanent



Europe:
PerkinElmer Optoelectronics
 GmbH & Co KG
 Wenzel Jaksch Str 31
 65199 Wiesbaden / Germany
 Phone +49(0)611 492 0
 Fax +49(0)611 492 170

USA:
PerkinElmer Optoelectronics
 44370 Christy Street
 Fremont, CA 94538-3180
 Phone +510 979 6500
 +800 775 6786
 Fax +510 687 1140

Asia: Dimensions in mm
PerkinElmer Optoelectronics
 47, Ayer Rajah Crescent #06-12
 Singapore 139947
 Phone +65 775 2022
 Fax +65 775 1008



Right for modification reserved / WS / 28.8.2003