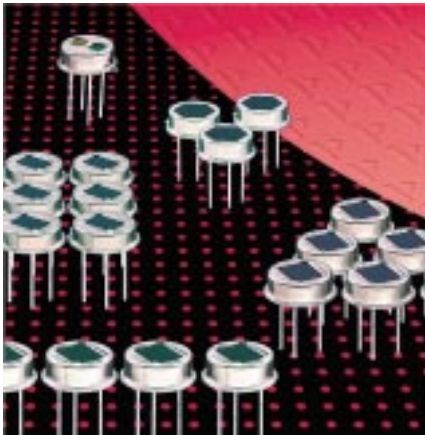


Pyroelectric Detector LHi 1128

Four Elements

Single FET Output and optical window

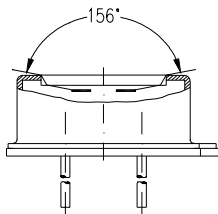


Quad element design

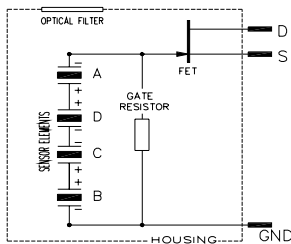
Designed for ceiling mount applications

The **LHi 1128** pyroelectric infrared detector is a special design for motion control in ceiling mount applications. It includes a Quad type pyroelectric ceramic with 4 sensitive elements connected to one FET in source follower connection. Thus it offers a single channel output.

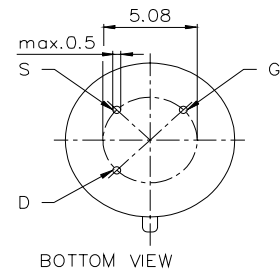
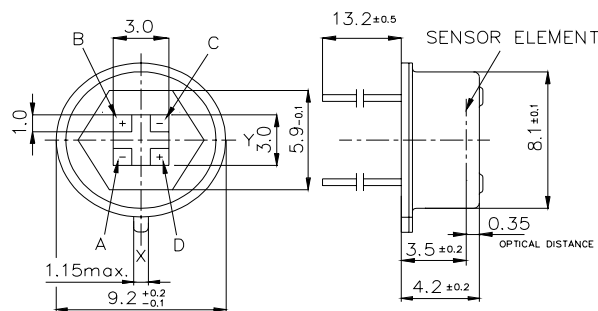
The **LHi 1128** detector is available in **TO-5** housing with infrared filter.



Field of View



Parameters	LHi 1128				condition
	min	typical	max	units	
Element size		1x1		mm ²	(4 elements)
Responsivity	6 000	8 000		V/W	100°C, 1 Hz
Match		1	10	%	
Noise		40	100	µVpp	25°C, 0,3...10Hz
Offset Voltage	0,2		1,55	V	R _s =47kΩ, 25°C
D*	5x10 ⁻⁷	19x10 ⁻⁷		cm √Hz/W	1Hz Bw, 100°C, 1 Hz
Output Impedance		5	10	kΩ	R _s =47kΩ, 25°C
Operating Voltage	2		12	V	R _s =47kΩ, 25°C
Field of View, horizontal		156°			unobstructed
Field of View, vertical		144°			unobstructed
Operating Temperature	40		85	°C	non permanent
Storage Temperature	-40		85	°C	non permanent



Europe:
PerkinElmer Optoelectronics
 GmbH & Co KG
 Wenzel Jaksch Str 31
 65199 Wiesbaden / Germany
 Phone +49(0)611 492 0
 Fax +49(0)611 492 170

USA:
PerkinElmer Optoelectronics
 44370 Christy Street
 Fremont, CA 94538-3180
 Phone +510 979 6500
 +800 775 6786
 Fax +510 687 1140

Asia: Dimensions in mm
PerkinElmer Optoelectronics
 47, Ayer Rajah Crescent #06-12
 Singapore 139947
 Phone +65 775 2022
 Fax +65 775 1008

Right for modification reserved / WS / 28.8.2003