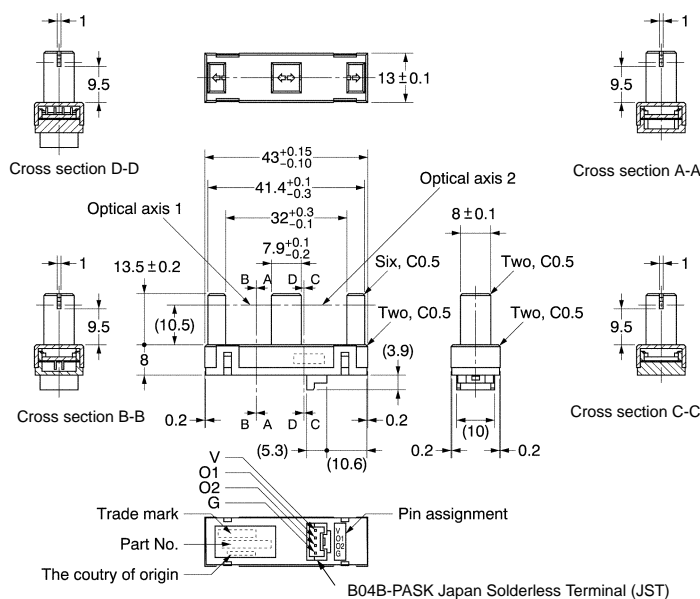
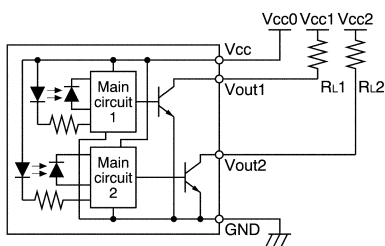


■ Dimensions

Note: All units are in millimeters unless otherwise indicated.



Internal Circuit



Terminal No.	Name
V	Power supply (Vcc)
O1	Vout1 (Optical axis 1)
O2	Vout2 (Optical axis 2)
G	Ground (GND)

Recommended Mating Connectors
JST (Japan Solderless Terminal)
PAP-04V-S

■ Features

- Separate LED/Photo IC combinations with 12-mm slot.
- Uses light modulation via built-in amplifier IC.
- Applicable to the PA connector series from JST (Japan Solderless Terminal).

■ Absolute Maximum Ratings (Ta = 25°C)

Item	Symbol	Rated value
Supply voltage	V _{cc}	16 VDC
Output voltage	V _{out}	16 V
Output current	I _{out}	50 mA
Operating temperature	T _{opr}	−10°C to 60°C
Storage temperature	T _{stg}	−40°C to 80°C

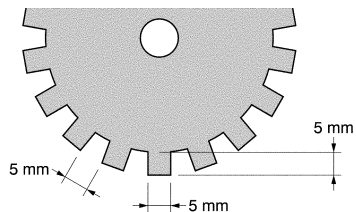
Unless otherwise specified, the tolerances are as shown below.

Dimensions	Tolerance
3 mm max.	±0.3
3 < mm ≤ 6	±0.375
6 < mm ≤ 10	±0.45
10 < mm ≤ 18	±0.55
18 < mm ≤ 30	±0.65
30 < mm ≤ 50	±0.8

■ Electrical and Optical Characteristics (Ta = 25°C, Vcc = 12 V \pm 10%)

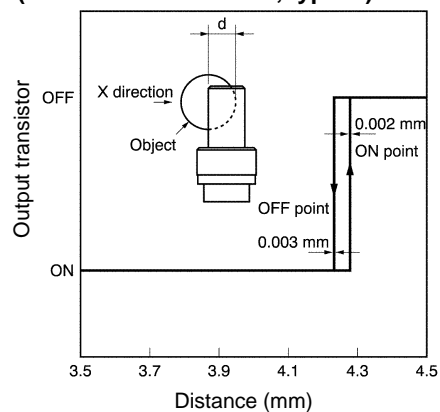
Item	Symbol	Limits			Unit	Testing conditions
		MIN.	TYP.	MAX.		
Current consumption	I _{cc}	---	---	35	mA	With/without object
Low level output voltage	V _{OL}	0.01	0.2	0.4	V	I _{out} = 20 mA without object
High level output current	I _{OH}	0	---	40	mA	V _{out} = 12 V with object
Ambient illumination	---	0	---	3,000	lx	Sunlight and fluorescent light
Response frequency	f	500	---	---	Hz	V _{cc0} = V _{cc1} = V _{cc2} = 12 VDC RL = 1.2 k Ω (See note.)

Note: The value indicated is that measured by rotating the disk as shown below.



■ Engineering Data

**Repetitive Sensing Position Characteristics for OUT1
(in horizontal direction, typical)**



**Repetitive Sensing Position Characteristics for OUT2
(in horizontal direction, typical)**

