

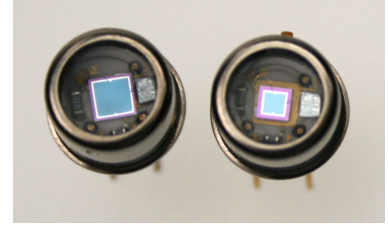
NEW

HYBRID PHOTODETECTOR

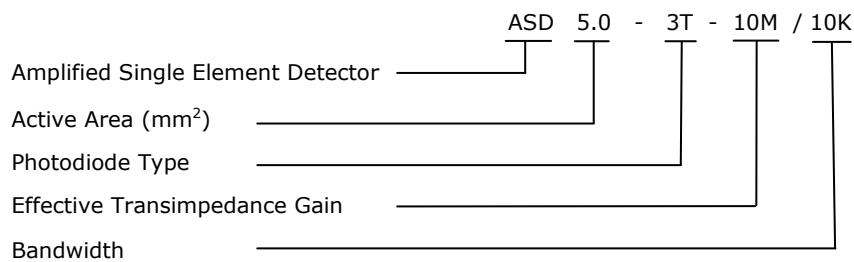
Amplified Single Element Detector (ASD) Series

Centronic ASD Series integrate high performance single element photodiodes coupled to a high input impedance op-amp to create a low noise, high gain photodetector. Light falling on the active area of the photodiode causes the output voltage to swing positive with respect to ground. The photodiode has been optimised for sensitivity to near infrared wavelengths. The detector and circuit are hermetically sealed in an industry standard TO5 package with a flat glass window.

Customer specified options include tailoring the photo response and transimpedance gain of the device. Alternative packaging can include multi-channel, thermoelectrically cooled, fibre coupled formats.



Ordering Information



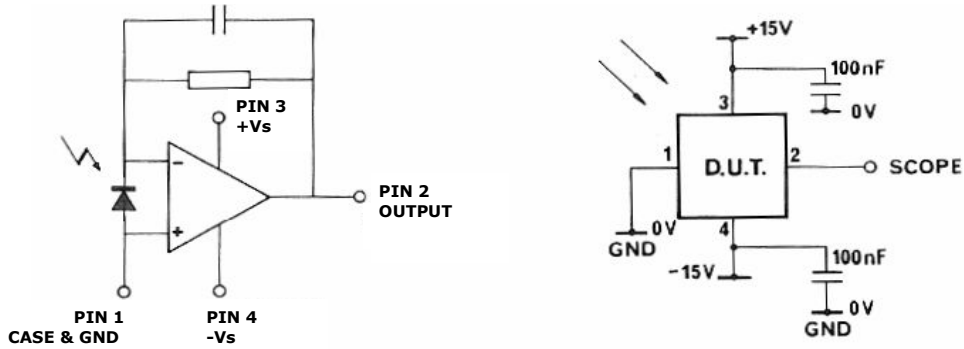
Typical Characteristics (measured at 22°C (±2) ambient unless otherwise)

Series	Active Area	Gain	Bandwidth	Spectral Enhancement				Dark Noise Amplitude (1MΩ)	Dark Noise Offset (1MΩ)	Risetime	Package
				UV	V	IR	E				
ASD 1.75-3T-10M/10K	mm ²	Ω	kHz			✓		mV	μs		
ASD 1.75-3T-10M/10K	1.75	10M	10			✓		1.0	2	50	TO5
ASD 5.0-3T-10M/10K	5.0	10M	10			✓		1.0	4	50	TO5

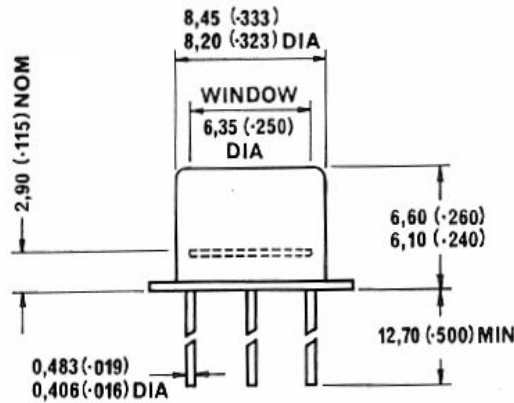
NEW

HYBRID PHOTODETECTOR

Circuit Schematic



Dimensional Outline



Dimensions: mm (inches)



Due to our policy of continued development, specifications are subject to change without notice.

CENTRONIC LTD
 King Henry's Drive
 Croydon
 Surrey
 CR9 0BG
 United Kingdom

Telephone: +44 (0) 1689 808055
 Email: eosales@centronic.co.uk
 Facsimile: 01689 845117
 Web: www.centronic.co.uk

CENTRONIC LLC
 16203 Park Row
 Suite 110
 Houston
 TX 777084
 United States

Telephone: +1 (281) 578 7900
 Email: info@centronic.us
 Web: www.centronic.us

